

Psychology

UNIVERSITY OF
Southampton



UNLOCKING THE **MYSTERIES OF THE MIND**

BSc Psychology 2015

Contents

- 04 A global university
- 12 Design your own education
- 14 Shape your future
- 18 Course overview
- 20 Course pages
- 28 Applying and funding
- 30 How to find us

Reach your goals at Southampton by combining your ambition, your talent and our support.

Choosing the right place to study is an important decision, with many factors to think about. Join us, an institution in the top one per cent of world universities* and a founding member of the Russell Group of research-intensive UK universities. At Southampton you are taught by world-leading academics on courses that are designed around you. We get you ready for the global jobs market, while giving you a great student experience.

We are among the foremost psychology centres in the UK with a world-class reputation for research and teaching. The 2014 *Guardian University Guide* ranked our course 13th in the UK placing us 7th among the leading Russell Group universities.

CHOOSE SOUTHAMPTON

*QS World University Ranking 2014

 Find out more
[www.southampton.ac.uk/
psychology](http://www.southampton.ac.uk/psychology)

CHOOSE SOUTHAMPTON: A GLOBAL UNIVERSITY

The city of Southampton has a history of innovation and exploration. As a forward-thinking University, we uphold these values in our education and research; join us to forge your successful future.

- Our students can study in 54 countries across the world
- Our 195,000 graduates are part of a network of professionals that covers 180 countries
- Our academics make a difference on every continent
- Our business, government and non-government organisation partners span the globe
- We are part of the Worldwide Universities Network, a collaboration of knowledge from around the world

We are an institution in the **TOP 1%** of global universities

UNIVERSAL EMOTIONS

An international study conducted by Dr Tim Wildschut has demonstrated the power of nostalgia to generate positive thinking among people from different cultures, countries and age groups

READING IN CHINA

Professor Simon Liversedge, a specialist in eye movements at Southampton, has analysed the way people read Chinese text to gain insight into the psychological processes underlying reading



We have **322** partnerships in **54** countries around the world



GLOBAL HEALTH DATA

With the World Health Organization, World Bank and European partners, Professor Alarcos Cieza is improving data collection methods to inform services for people with disabilities and brain disorders

IMPROVING SEXUAL HEALTH

A collaboration with Dr Cynthia Graham and researchers in the US and Canada on condom use errors aims to reduce the risk of sexually transmitted diseases and unwanted pregnancies



Study abroad opportunities include: **Denmark, France, Hong Kong, Japan, Canada and Australia**

STUDYING IN MADRID

BSc Psychology student Helen Baranova spent 6 months enhancing her psychology studies at the Universidad Complutense in Madrid on our Erasmus programme



EARLY ADVERSITY AND DEVELOPMENT

Our researchers are tracking the progress of Romanian adoptees to explore the longer-term impact of severe institutional deprivation in early life

Our University of Southampton Malaysia Campus offers students the chance to gain a unique 'Southampton' education in Malaysia combined with two years in the UK

[Find out more](http://www.southampton.ac.uk/global)
www.southampton.ac.uk/global

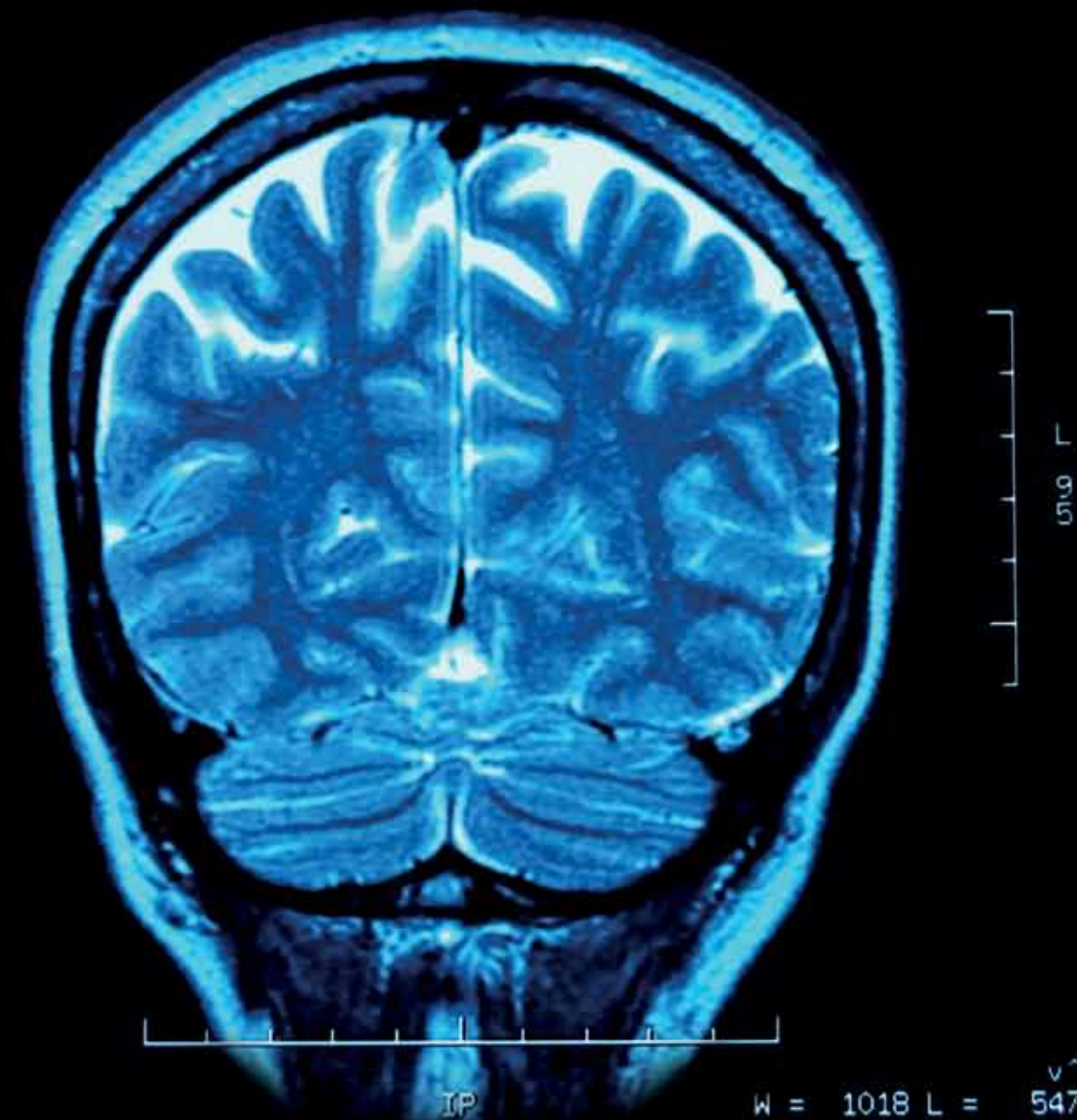
CHOOSE SOUTHAMPTON: CHANGE THE WORLD

Mapping the antisocial brain

Psychology researchers at Southampton are investigating the neurobiological basis of violence, with the ultimate aim of developing new interventions to reduce antisocial behaviour and aggression among young people.

The research team, led by Dr Graeme Fairchild, is using state-of-the-art brain imaging techniques, such as magnetic resonance imaging, to study brain structure and function in young offenders or adolescents with a history of violence.

Initial results suggest that brain networks involved in emotion recognition and empathy work differently in young offenders compared to adolescents with typical development. Their research has also identified structural changes in brain areas involved in empathy and emotion recognition in young offenders, which may help to explain their aggressive behaviour.



GAINING NEW INSIGHTS

Graeme is a member of the multidisciplinary Developmental Brain-Behaviour Laboratory, which aims to increase the understanding of mental disorders in children and adolescents

EXAMINING GENDER DIFFERENCES

A further study is comparing teenagers with and without severe antisocial behaviour to examine whether the underlying causes of this behaviour differ between the sexes of typically developing adolescents

LEADING EXPERTISE


Our academics include world experts on attention-deficit/hyperactivity disorder, autism and anxiety

[Find out more
www.southampton.ac.uk/
psychology/dbbl](https://www.southampton.ac.uk/psychology/dbbl)

CHOOSE SOUTHAMPTON: PASSION, IMPACT, ADVANTAGE

Our people have a passion to change the world through their research and collaborations with global partners.

- Our lecturers push the boundaries of knowledge
- Benefit from our research active academic team; their work informs your education
- We provide you with a rich curriculum with additional opportunities to broaden your multidisciplinary knowledge
- You are involved with important research as it unfolds
- We offer you a vibrant culture of partnership and collaboration in our academic community



**DR EDWARD REDHEAD
SENIOR LECTURER,
DIRECTOR OF
STUDENT SUPPORT**

Ed examines how we learn to find our way around new places; recent research includes a study of the neurological basis of spatial memory impairment in people with epilepsy.

He also oversees the pastoral support for psychology undergraduates and has won two Vice-Chancellor's teaching awards



**DR CLAIRE HART
LECTURER IN
PSYCHOLOGY**

Concepts of identity and self are the focus of Claire's research. Her projects include examinations of various aspects of narcissism



**DR TAMARYN MENNEER
LECTURER AND
DEPUTY DIRECTOR OF
STUDENT SUPPORT**

Tammy's research into the functioning of the human visual system is contributing to improved airport security. She is the winner of a student-nominated University award for teaching statistics



**DR JANA KREPPNER
LECTURER IN
DEVELOPMENTAL
PSYCHOPATHOLOGY**

An active researcher and Programme Director for BSc Psychology, Jana has a particular interest in the effects of early experiences on later psychological and social functioning



**DR SANDER THOMAES
SENIOR LECTURER**

In addition to his research into children's self-perception, Sander's role includes supporting international psychology students who want to improve their English language skills

 Find out more
[www.southampton.ac.uk/
people](http://www.southampton.ac.uk/people)

CHOOSE SOUTHAMPTON: CHANGE THE WORLD

Improving treatments for people with anxiety

Pioneering research at Southampton is generating new insights into anxiety in order to benefit the large number of people who suffer from anxiety-related conditions.

A team led by Dr Matthew Garner has developed an innovative technique that involves inducing anxiety symptoms in study participants through the inhalation of carbon dioxide (CO₂). The researchers then measure participants' responses in a series of computerised tasks, to examine how anxiety affects physiology, cognition, behaviour and brain activity.

Matt's research group is the first to use this experimental model to evaluate both pharmacological and psychological interventions for anxiety. Working with colleagues in psychiatry, clinical psychology and the pharmaceutical industry, the researchers can quickly assess the potential of new treatments that could improve the lives of people with anxiety.

PIONEERING MODELS

Innovative experimental approaches are helping to develop pharmacological and psychological treatments

RELIABLE TECHNIQUES

Our CO₂ inhalation model provides a quick, effective and safe technique to evaluate novel interventions

HIGH PREVALENCE

16% of men and 20% of women have suffered from anxiety symptoms, according to a comprehensive UK study*

*Measuring National Wellbeing Programme



Find out more
[www.southampton.ac.uk/
researchfacilities](http://www.southampton.ac.uk/researchfacilities)

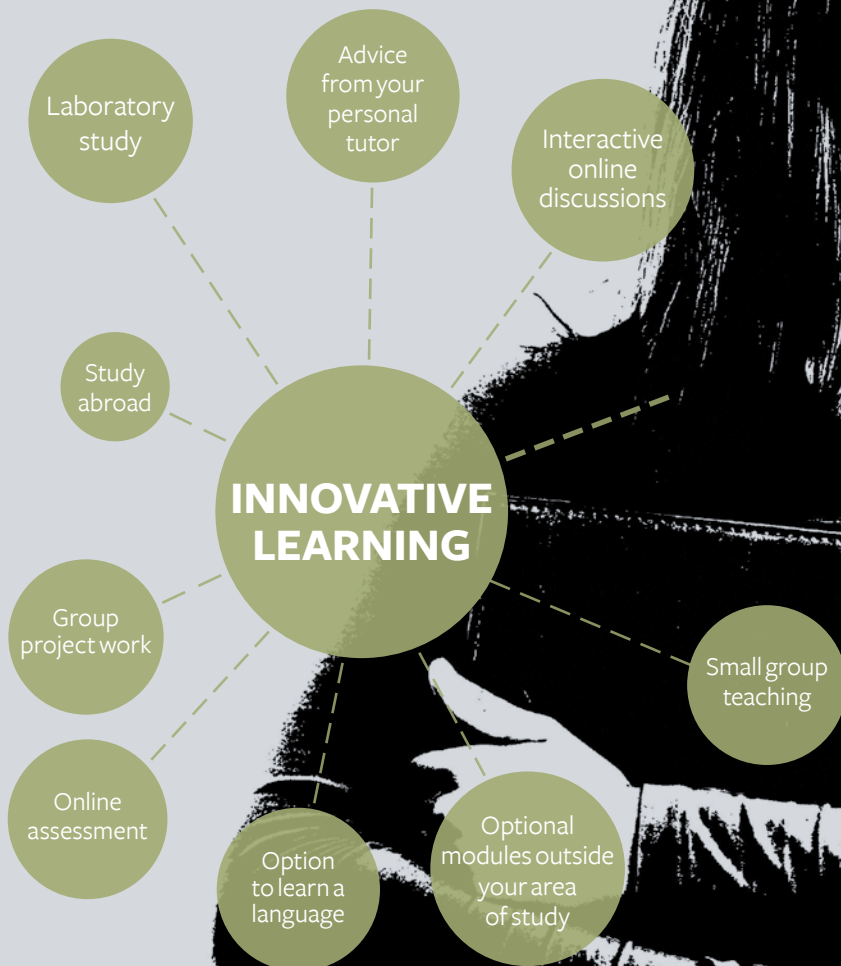
CHOOSE SOUTHAMPTON: DESIGN YOUR OWN EDUCATION

Your courses are developed and taught by world experts

Your course offers you breadth as well as depth

- ➔ Be independent and shape your course
- ➔ As well as attending lectures and seminars, you can access many lectures and learning resources on the move
- ➔ We work with you to make programmes more flexible
- ➔ Employers are actively involved in shaping your degree programme

INNOVATIVE LEARNING



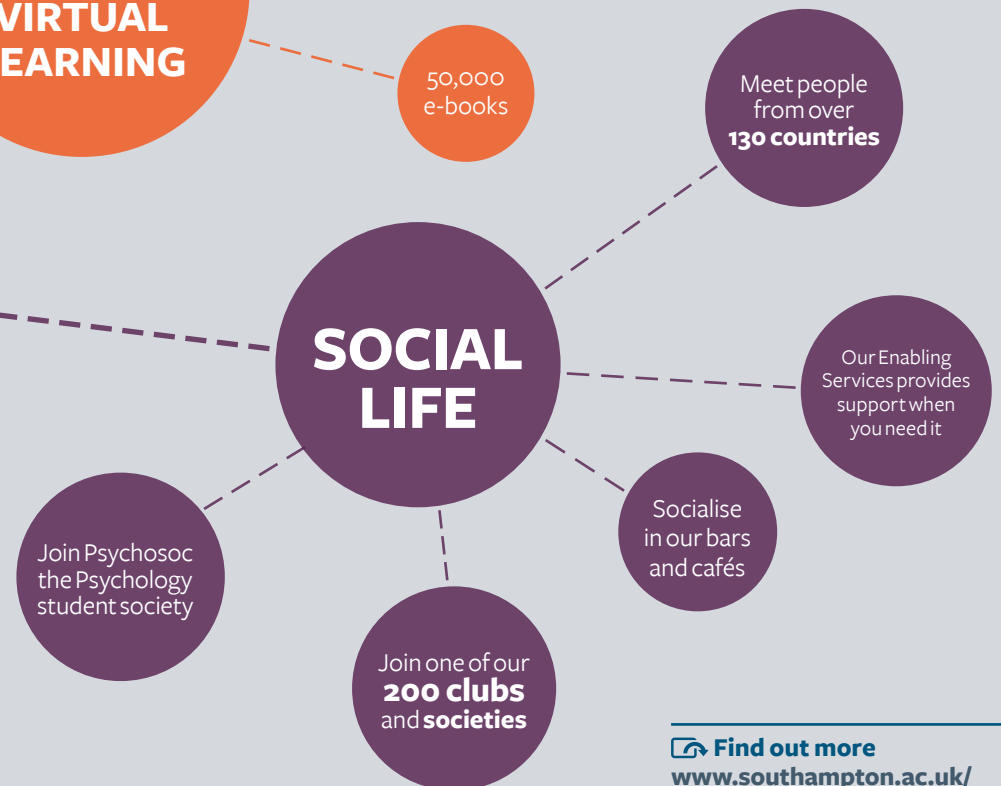
GET AHEAD FOR YOUR CAREER



24-HOUR ACCESS TO VIRTUAL LEARNING



SOCIAL LIFE



[Find out more](http://www.southampton.ac.uk/choice)
www.southampton.ac.uk/choice

CHOOSE SOUTHAMPTON: SHAPE YOUR FUTURE

A degree at Southampton opens doors for career opportunities

Southampton fast-tracks your ambitions:

- We prepare you for future challenges not yet imagined and jobs not yet thought of
- We are among the top 20 UK universities targeted by the largest number of top 100 graduate recruiters*
- In the most recent Destinations of Leavers from Higher Education statistics 91% of our psychology graduates were in work or further study
- We are one of the top 30 UK universities for graduate starting salaries**

Our programme serves as a stepping stone onto a broad set of specialist postgraduate qualifications:

- MSc Foundations of Clinical Psychology (1 year)
- MSc Health Psychology (1 year)
- MSc Research Methods in Psychology (1 year)
- Doctorate Clinical Psychology (DClinPsych)
- Doctorate Educational Psychology (DEdPsych)
- MPhil/PhD in Psychology by Research
- MPhil/PhD Health Psychology Research and Professional Practice

We also run a range of postgraduate CBT certificates and diplomas.

To learn more visit
www.southampton.ac.uk/psychology/cpd

Our Employability Coordinator can help to point you in the right direction so that you build the relevant skills and experience you need to further your career. They have connections with local, national and international employers as well as the University's Careers Destinations service.

Our graduates land jobs at high-profile organisations such as:

Royal Navy
HSBC
Ernst & Young
Metropolitan Police
British Telecom
Major universities and colleges
Hampshire Partnerships
Hampshire County Council
NHS Trusts
National Autistic Society
National Migraine Centre
Team Brain Injury
Terrence Higgins Trust



Find out more
To learn how your Southampton Opportunity can get you ready for employment, visit
www.southampton.ac.uk/dreamcv

* High Fliers Research
** The Sunday Times University Guide 2014



WHAT'S YOUR **AMBITION?**

**TO INCREASE ACCESS TO
MENTAL HEALTH SERVICES**

Dr Colin Hicks

BSc Psychology, 2003;

PG Dip in Cognitive Therapy, 2008;

Associate Director, Dorset HealthCare

Studying at Southampton was an easy choice for Colin, who was impressed by the campus, by Psychology's academic team and by the content of the psychology programme.

After graduating he returned to Southampton to work in mental health services. Colin progressed to the role of Associate Director at Dorset HealthCare and is now responsible for the delivery of primary care talking therapy services in Southampton and across Dorset.

The role involves the clinical and strategic leadership of a division of over 150 staff as well as project management, strategic planning, budgeting and bid-writing.

His association with the University continues; he is currently working with our cognitive behavioural therapy centre on a research project within the health service.

Find out more
about Colin's Southampton
Opportunity – and the one that
could be waiting for you – visit
[www.southampton.ac.uk/
psychology/colinhicks](http://www.southampton.ac.uk/psychology/colinhicks)
Join in the conversation:
#myambition

COURSE OVERVIEW

Choose Southampton

- Flexible, interdisciplinary programme with research project in year three
- You will cover material from 6 key research areas of psychology
- Our academics conduct research in our seven specialist research groups; you will benefit directly from their expertise and experience
- Friendly staff and cutting-edge facilities and laboratories
- In the latest Research Assessment Exercise, Psychology at Southampton received a grade point average of 2.70, ranking it 8th in the UK

91%

of our students were impressed by the enthusiasm of our teaching staff*

91%

satisfied with the quality of the course*

*National Student Survey 2013

BSc PSYCHOLOGY C800

Psychology is the scientific study of behaviour and mental functioning. Our graduates leave us as highly competent, motivated psychologists equipped with excellent analytical and reasoning skills.

We provide you with the chance to study a broad range of topics within psychology including close relationships, the visual system, memory, addiction, pain management, autism, attention-deficit/hyperactivity disorder (ADHD), early deprivation, antisocial behaviour, sexual health and the treatment of diabetes. These are just a few of the areas in which our research teams specialise and which aid the wider community.

Our degree programme also allows flexibility of study, providing a framework in Years 1 and 2, and then providing complete choice of study in Year 3. Notably, in addition to study within the traditional academic environment, we are pleased to offer opportunities to study in local school settings through our established Ambassador and abroad through our Erasmus schemes.

How will you learn?

Within Psychology there are over 400 undergraduate students, and over 150 postgraduate students. All are taught within a well-supported, enjoyable learning environment in which library resources, excellent online resources, and friendly personal tutors help students achieve their potential.

Modules are taught via a mixture of lectures, tutorials and interactive learning sessions. Assessment varies between modules with a combination of exams and coursework to suit the material. Other modules on research skills, such as Research Methods and Data Analysis I, II and III have midterm exams and final exams.

We also recognise the value of learning through hands-on experience so credit is given in all years for participating in our own ongoing psychological research. In addition, we prize and protect the opportunity for small-group teaching with academic tutors. You will have a personal tutor who will be able to advise you on academic issues and who will play a role in monitoring your progress during your degree.

Our academic staff are internationally respected in their fields and provide cutting-edge and world-leading debate and instruction in their areas of expertise. From the very first weeks of study, our students learn with the most esteemed professors of psychology and this, we believe, sets our degree programme apart from others in the UK and beyond.

Our degree programme is approved by the British Psychological Society (providing Graduate Basis for Chartership) and as a research-led department we equip students with a selection of transferable skills favoured by employers. Our degree also serves as a starting point for more specialist professional training, much of which is offered in-house.

Facilities

We provide an e-lecture theatre, allowing interactive learning, and an informal learning environment called the iZone, designed to encourage teamwork and collaborative learning. You will have access to a wide range of facilities to support your own research projects, including audio-visual, ERP (evoked response potential) and eye-tracking facilities.

Support

We aim to give you all the support you need to excel in psychology and develop skills for the future.

As well as providing academic support, your personal tutor can provide pastoral care, support and advice for non-academic problems that you may face during your time at University.

During their first year, our undergraduates meet with their personal tutor weekly during a module called Thinking Psychologically, which helps students to develop skills necessary to study psychology. In the following semesters students meet their personal tutors on a regular basis. We also have a dedicated staff member within Psychology (the Director of Student Support) who acts as a point of contact for any student who is experiencing difficulties.

[Further information](http://www.southampton.ac.uk/psychology/undergraduate)
www.southampton.ac.uk/psychology/undergraduate

T: +44 (0)23 8059 2619

E: ugapply.fshs@southampton.ac.uk

THE FIRST YEAR

As well as learning about the fundamentals of psychology as a science you'll have the option to broaden your knowledge by choosing two modules from other disciplines.

The BSc Psychology curriculum introduces you to essential tenets of psychological theory in the broad areas of cognition and social and individual wellbeing. You will also be introduced to essential methods of research enquiry and data analysis which will support your own research studies.

The Science of Psychology

Despite diverse sub-disciplines and approaches, scientific psychology is unified in its goal to understand human behaviour and mental events. This topic-based course focuses on the most important empirical findings and theories, and the current state of research in a number of psychological areas.

The Psychology of Social and Individual Wellbeing

Basic and applied research in all areas of psychological inquiry is linked with examples of everyday experience. In addition, you get the opportunity to take part in ongoing psychological research in order to acquire an improved understanding of the methods, findings and relevance of modern psychological research.

Thinking Psychologically

You meet weekly with your personal tutor to develop your critical thinking, effective working within teams, peer-learning and discussion, and individual responsibility; transferable skills that are essential to a highly competent psychologist.

Research Methods and Data Analysis I

As a science, psychology involves experimental work and this module introduces you to the methods used in conducting research and the techniques for analysing the results. These skills will enable both your critical evaluation of published work and the design and execution of your own innovative research studies.

Research Methods and Data Analysis II

As an extension of the Research Methods module presented in the first semester, this course consolidates your understanding of statistical techniques and introduces computer-based statistical data analysis.

Empirical Studies

The course provides you with practical experience of the main methods within psychological research, together with experience in the analysis of data and the presentation of psychological findings.

Psychology optional units

The Psychology of Attractiveness

What constitutes physical and interpersonal attractiveness? What triggers friendships or romantic relationships? What difference does attractiveness make to people's lives? These are some of the questions you'll investigate during the course of this module.

As well as learning about theories and perspectives relating to love and attraction, you'll gain insights into how attraction can be better understood through empirical investigation.

Classic Studies in Psychology

This unit provides a selective overview of critical studies in psychology. The topics are taken from the broad sweep of sub-disciplines within psychology, ranging from abnormal, behavioural, cognitive, developmental, health, and neuropsychology. The aim of the unit is to demonstrate the enduring importance of classic studies, placing them in their appropriate historical context, and to demonstrate their continuing influence on the discipline.


Non-psychology options

These can include available modules from other disciplines (for example, Archaeology, Arts, Biochemistry, Biology, Computer Science, Criminology, Management, Sociology, Philosophy, Politics, etc) as well as specific interdisciplinary modules that have been developed to offer students across the University the opportunity to engage in globally relevant issues, and to develop skills and knowledge beyond their degree discipline (www.southampton.ac.uk/cip)

 **Further information**
www.southampton.ac.uk/psychology/c800

T: +44 (0)23 8059 2619

E: ugapply.fshs@southampton.ac.uk



Students will discover how humans perceive, learn and think about information

THE SECOND YEAR

You will cover material from six key research areas of psychology: Neuroscience, Developmental Psychology, Individual Differences, Cognitive Psychology, Perception, and Social Psychology. In addition, your training in research methods and practical tuition are extended in preparation for the final year project.

Behavioural Neuroscience

This unit aims to develop the themes introduced in the year 1 courses. The unit integrates the approaches and findings of biological psychology in an attempt to understand why people behave as they do.

Developmental Psychology

This unit introduces you to basic issues in developmental psychological research. It reviews the changes of development, considers the major theoretical explanations for change and examines research methods used in psychology to explore and understand development.

Individual Differences

This unit covers the topics of personality and intelligence from an individual difference perspective, examining issues such as intelligence testing, personality constructs, and how theories should be developed and empirically tested.

Language and Memory

Language and Memory will give you an insight into these complementary areas of mental processing in which mental representations or memories underpin the semantic processing of human language and vice versa. This unit shows how quite discrete areas of enquiry are nevertheless intertwined.

Perception

Perception provides an understanding of the processes by which the visual and acoustic systems generate representations that can be used in high-level cognitive tasks.

Social Psychology

This unit is designed to familiarise you with the principal theories, concepts and methods of social psychology. The material covers major topics related to social behaviour. The lectures and readings will acquaint you with both classic and current issues in social psychology and will help you to discover ways to apply social-psychological principles to your day-to-day experiences.

In addition to the above, students will follow the [Research Methods and Data Analysis III](#) course and undertake the [Empirical Studies II](#) class. At the end of this year, all British Psychological Society topic areas will have been covered.

THE FINAL YEAR

The wide selection on offer in the final year allows you to select and tailor your own studies to areas of interest, or to potential career pathways.

In the final year, you will study eight modules. Two of these are compulsory and relate to the Empirical Project. The remaining six are optional seminar units and you can choose them from an available list each reflecting the research expertise and interest of our academic staff. These seminar courses (for example Attachment and Personal Relationships, Educational Psychology, Current Issues in Clinical Psychology) are based upon individual reading and open discussion of up-to-date research. You can also choose 2 options from a set of

interdisciplinary modules as part of the Curriculum Innovation Programme (www.southampton.ac.uk/cip)

You will choose a topic for a literature review and a research project, which are completed under the supervision of one of our lecturers. From basic learning through to emotion and motivation, final-year research projects investigate the psychological mechanisms involved in a wide range of processes. Methodologies might include surveys, audio-visual ERP

(evoked response potential) measures, eye tracking, facial electromyography or physiological measurements such as heart rate and skin conductance.

You will be supported in your research by an experienced and research active supervisor.

The research project is the culmination of three years' research training and represents a valuable and original piece of psychological research, the best example of which will be awarded a prize at graduation.

COURSE SUMMARY

First year | Core modules

- The Science of Psychology
- Psychology of Social and Individual Wellbeing
- Research Methods & Data Analysis I
- Research Methods & Data Analysis II
- Empirical Studies

Non-core modules

- Thinking Psychologically
- Two options

Second year | Core modules

- Behavioural Neuroscience
- Developmental Psychology
- Individual Differences
- Language and Memory
- Perception
- Social Psychology
- Research Methods & Data Analysis III
- Empirical Studies II

Final year | Core modules

- Literature Review
- Research Project

Non-core modules

- Opportunity for interdisciplinary study
- Six optional modules: see www.southampton.ac.uk/psychology/ug/c800modules for further details



Using facial electromyography to measure emotions (frowns and smiles)

[Further information
www.southampton.ac.uk/
psychology/c800](http://www.southampton.ac.uk/psychology/c800)

T: +44 (0)23 8059 2619

E: ugapply.fshs@southampton.ac.uk

CHOOSE SOUTHAMPTON: ENHANCE YOUR SKILLS

A wealth of opportunities

Alongside your degree programme, you can take advantage of our research, placement and exchange initiatives to gain valuable experience for your future.

The Voluntary Research Assistant (VRA) scheme gives you the opportunity to gain additional hands-on research experience. Working closely with our expert researchers, you'll contribute towards their cutting-edge projects while developing new skills and learning about different topics in greater depth. Research projects vary each year but span the whole of psychology, including visual cognition, developmental disorders, self and identity, health interventions, psychophysiology and much more. For more information visit www.southampton.ac.uk/psychology/vra

Explore potential career paths by applying for our summer work placement scheme and working with researchers and psychologists in a real-world professional setting. Students can also opt to study abroad at one of our Erasmus partner universities including the Université Paris Descartes, Kyoto University and the University of Western Ontario. To learn more visit www.southampton.ac.uk/erasmus

Our students work closely with academics on live research projects with our Voluntary Research Assistant scheme



EXPAND YOUR HORIZONS

Build confidence, experience new cultures and enhance your subject knowledge with our study-abroad scheme

HANDS-ON RESEARCH

Boost your employability and gain practical research experience with the VRA scheme

WORK PLACEMENTS

Work alongside psychology professionals within the University, in the NHS or in market research

[Find out more
www.southampton.ac.uk/
psychology/employability](http://www.southampton.ac.uk/psychology/employability)

YOUR STUDENT EXPERIENCE

Our six campuses all offer a friendly, vibrant and diverse atmosphere for work and leisure.

Campuses

Highfield Campus caters for most of our academic courses. Incorporating first-class research and teaching facilities, it boasts new and refurbished student facilities such as SUSU, the University of Southampton Students' Union, and the Jubilee Sports Centre.

Our research centres are also based here:

- Centre for Applications of Health Psychology
- Centre for Research on Self and Identity
- Centre for Sexual Health Research
- Centre for Vision and Cognition
- Developmental Brain-Behaviour Laboratory
- Emotion and Personality Bio-behavioural Laboratory
- Experimental Psychopathology Laboratory

The University's Hartley Library is one of the leading research libraries in the country and is situated within a few minutes' walk from Psychology. This recently extended and refurbished library provides access to books, electronic journals and a range of other resources to support your studies.

Highfield Campus is also the location of the Student Services Centre, which offers the essential support services you would expect at a top-class university.

Southampton General Hospital is home to University Hospital Southampton NHS Foundation Trust and is a major centre for teaching and research in association with the University.

Avenue Campus houses the state-of-the-art purpose-built £3m Archaeology Building and is located on the edge of Southampton Common, a short walk from Highfield.

The University's collaboration with Lloyd's Register represents one of the largest business partnerships with any single university in the world. Our new £116m Boldrewood Campus is the result of this partnership and is home to the Southampton Marine and Maritime Institute.

The National Oceanography Centre Southampton is our waterfront campus and is one of the world's leading research centres for the study of ocean and earth sciences.

Winchester School of Art is located 12 miles north of Southampton, in Winchester city centre.

Our branch campus for engineering is in EduCity, Iskandar in Malaysia and benefits from innovative world-class facilities for engineering and full access to the learning resources at our UK campuses. It offers undergraduate students the opportunity to study in a safe international environment.



01 The Shackleton building, home of Psychology at Southampton

02 Cook and socialise

03 Oxford Street

04 Try taekwondo



02



You can socialise with friends in one of our bars or cafés on campus and in our halls of residence, as well as in the city of Southampton

03



04

- Become a DJ or director at Surge Radio and SUSUtv
- Try out journalism for the *Wessex Scene* or *The Edge* magazines

Accommodation

Get the best out of your student life; stay in one of our 6,500 student rooms in halls. You can choose from a range of room types that includes a new development of over 1,400 rooms in Southampton city centre.

Live in either self-catered halls of residence with well-equipped communal kitchens, or part-catered accommodation where you enjoy the benefits of breakfast and evening meals throughout the week, plus some other meals at the weekend.

If you are a registered first-year undergraduate student new to the University, starting a full-time course, with no dependents, you will be guaranteed an offer of halls accommodation as long as you fulfil the full criteria of the guarantee, which includes applying before 1 August.

To uphold the guarantee, in years of exceptional demand we may offer accommodation in a twin shared room at the start of the academic year for a short, temporary period of time.

For more information on our guarantee to you, visit www.southampton.ac.uk/guarantee

Social life

Run by students for students, SUSU, the University of Southampton Students' Union, offers a wide range of services and opportunities for you to get the most out of your free time.

- Experience Your Freshers' – a week full of activities to help you settle in
- Discover a new talent: try some of our 80 sports clubs from archery to taekwondo
- Join one of our 200 societies from performing arts to politics
- Help local people: get involved in community volunteering projects and fundraising
- Socialise with friends in one of our bars or cafés on our campuses and in our halls of residence
- See high-profile acts such as Pixie Lott and Greg James
- Catch a film in our 330-seat cinema
- Dance the night away in our large venue for big events and gigs

Find out more

University Residences
T: +44 (0)23 8059 5959
E: accommodation@southampton.ac.uk
www.southampton.ac.uk/accommodation

APPLYING AND FUNDING

We realise that going to university is a significant investment, so we'll ensure you have all the information you need to make an informed decision.

General entry requirements

To apply for undergraduate study you must satisfy our general entry requirements and any specific requirements of your chosen programme. Typical entry requirements for applicants with GCE A levels can be found online.

How to apply

Apply online at www.ucas.com the website for the Universities and Colleges Admissions Service (UCAS). Our UCAS code name is SOTON and our number is S27. All students should apply between 1 September 2014 and 15 January 2015. If you are an international student from outside the UK or EU, we may consider your application up until 30 June 2015. However, we cannot guarantee there will be vacancies on our courses after the January deadline.

Admissions policy

1. The University of Southampton will:
 - recruit students from a wide range of backgrounds, who we believe have the potential to complete their programmes successfully
 - attract applicants who enjoy the challenge of forward thinking, the excitement of research findings and our high education standards
 - foster a diverse learning community in which our students will meet people from different cultures, thereby enhancing their skills of critical reasoning, teamwork and communication

2. The University is committed to a system of admissions that ensures fairness, transparency and equal opportunities within the legal framework of the UK and best practice. All reasonable effort will be made to ensure that no prospective or existing student is unreasonably treated.

Tuition fees and funding

The University will set fees for 2015/16 when the government establishes limits for tuition fees. For 2014/15, the University set the tuition fee at £9,000, but we offer a large number of generous fee waivers and bursaries for eligible students.

For students from lower income families, these financial packages will be based on household income supplied to us by the Student Loans Company.

Your tuition fee may cover compulsory course costs, such as field trips and laboratory clothing; however a contribution may be necessary towards certain elements. Please check with the Admissions team for more details.

Visit our website for the latest information on tuition fees before you submit your UCAS form for entry in the 2015/16 academic year. Students who have applied for a deferred place in 2014/15 will be eligible for the 2015/16 tuition fees and support.

If you are a UK student starting a higher education course in 2015/16, you can apply for loans to help pay for both fees and maintenance. For more details, visit www.southampton.ac.uk/money

For up-to-date information on tuition fees for international students, visit our website.

Scholarships and bursaries

We offer a variety of scholarships and progression awards to the most talented students across our subject areas. For full eligibility criteria and up-to-date information, visit www.southampton.ac.uk/scholarships

We also offer a generous range of bursaries designed to help UK undergraduate students in the most financial need. For more details and up-to-date information, visit www.southampton.ac.uk/bursaries

Visit days

Once provisional offers have been made, prospective students and their guests will be invited to attend psychology visit days. During these visits members of the academic team will outline the course in more detail, and applicants and guests will be shown around the University. Current undergraduates will be available to answer questions from a student perspective.

 Find out more
www.southampton.ac.uk/fees

T: +44 (0)23 8059 4732

E: admissions@southampton.ac.uk

INTERNATIONAL STUDENTS

Join us and students from more than 130 different countries at Southampton.

Living and studying in a different country has its own unique challenges. We make student entry straightforward, offer attractive scholarships to eligible applicants, help you settle into your new life and advise you on all aspects of living in the UK.

Our network of services and advisors ensure that your studies and life at Southampton is as productive and stress-free as possible.

International Office

Staff from our International Office attend educational exhibitions around the world as well as making numerous visits overseas and to colleges in the UK. If you are unable to visit us in Southampton, make sure you book an appointment to meet us at one of the exhibitions or join us on a virtual open day.

You will find a quick introduction to the University on our website, which is available in other languages. You can also view web pages dedicated to 50 specific countries.

To join us on a virtual open day, visit www.southampton.ac.uk/virtualopen day

Welcome week

In September each year, we arrange Welcome week, which helps you settle into life here. The week includes general events to introduce you to our facilities, subject-specific events to begin your academic induction and a range of social and cultural activities.

During the week, you will meet other undergraduate students and explore the University and the city, so that you know where to worship, relax and shop. You will also meet current international students who will be able to give you good advice.

Meet and Greet

The Meet and Greet service from London Heathrow Airport is provided free of charge and is designed to get you to the University in time for the Welcome week. If you are starting your studies in 2015/16, you can register for both the Meet and Greet service and the Welcome week from July 2015 on our website.

Visas

Before you join us, find out about the UK's immigration procedures. Do this well in advance of your arrival in the UK. Our website provides information on student visas, police registration, working in the UK and has links to other useful websites.

International scholarships

We offer a number of subject-specific scholarships and bursaries to international students. These are based on international merit and vary depending on the subject.

English language requirements

If English is not your first language, you will need to demonstrate that you have reached a satisfactory standard in an approved English language test. For the majority of our courses we require an IELTS level of 6.5 or equivalent, achieved in the past two years. If you need to improve your English language skills, you can apply to our pre-sessional English language courses. For more information on general English language requirements please visit our website.

 Find out more
www.southampton.ac.uk/international

T: +44 (0)23 8059 9699

E: global@southampton.ac.uk

HOW TO FIND US



CAMPUS INFORMATION

- University buildings
- Halls of residence

TRANSPORT INFORMATION

- Airport
- Ferry terminal
- Railway station
- Coach station

Find out more
www.southampton.ac.uk/campuses

- 01 Top 15 retail destination in the UK
- 02 Avenue Campus
- 03 Highfield Campus
- 04 Coastal location offering a vast range of sport and leisure opportunities, with waterfront marinas, restaurants and bars



TERMS & CONDITIONS

Relevant web links are shown throughout the **Psychology Undergraduate Courses 2015 brochure**. Please also consult www.southampton.ac.uk/psychology online for further details and/or any changes which have appeared since first publication of the **Psychology Undergraduate Courses 2015 brochure** or phone +44 (0)23 8059 2619 for more information.

Disclaimer

The University of Southampton will use all reasonable efforts to deliver advertised programmes and other services and facilities in accordance with the descriptions set out in its prospectuses, student handbooks, welcome guides and website. It will provide students with the tuition, learning support, services and facilities as described with reasonable care and skill.

The University, therefore, reserves the right if it considers it to be necessary to alter the timetable, location, content or method of delivery of events provided such alterations are reasonable.

Financial or other losses

The University will not be held liable for any direct or indirect financial or other losses or damage arising from changes made to the event timetable, location, content or method of delivery of various services and facilities set out herein.

Force majeure

The University will not be held liable for any loss, damage or expense resulting from any delay, variation or failure in the provision of services and facilities set out herein, arising from circumstances beyond the University's reasonable control, including (but not limited to) war or threat of war, riot, civil strife, terrorist activity, industrial dispute, natural or nuclear disaster, adverse weather conditions, interruption in power supplies or other services for any reason, fire, boycott and telecommunications failure.

In the event that such circumstances beyond the reasonable control of the University arise, it will use all reasonable endeavours to minimise disruption as far as it is practical to do so.

© University of Southampton 2015

This information can be made available, on request, in alternative formats such as electronic, large print, Braille or audio tape, and in some cases, other languages. Please call +44 (0)23 8059 7726 to request an alternative format.

www.southampton.ac.uk/psychology

UK and EU enquiries:

ugapply.fshs@southampton.ac.uk

+44 (0)23 8059 2619

International enquiries:

global@southampton.ac.uk

+44 (0)23 8059 9699



When finished with this document please recycle it.